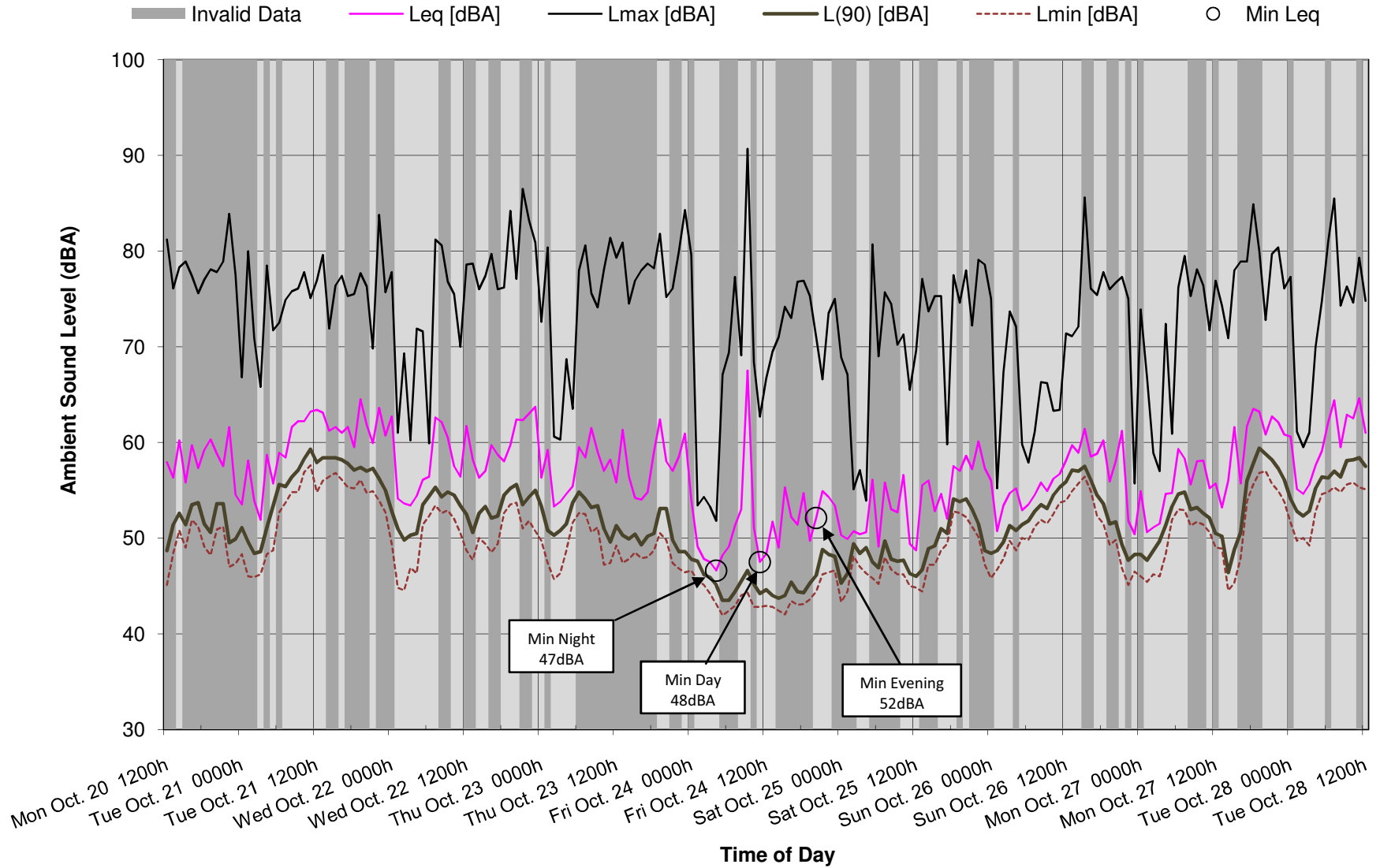


APPENDIX E

Ambinet Sound Level Data

DRAFT

York-Durham EfW Project - Monitoring Results (Courtice Road)



Weather Data for Monitoring Period - Courtice Road

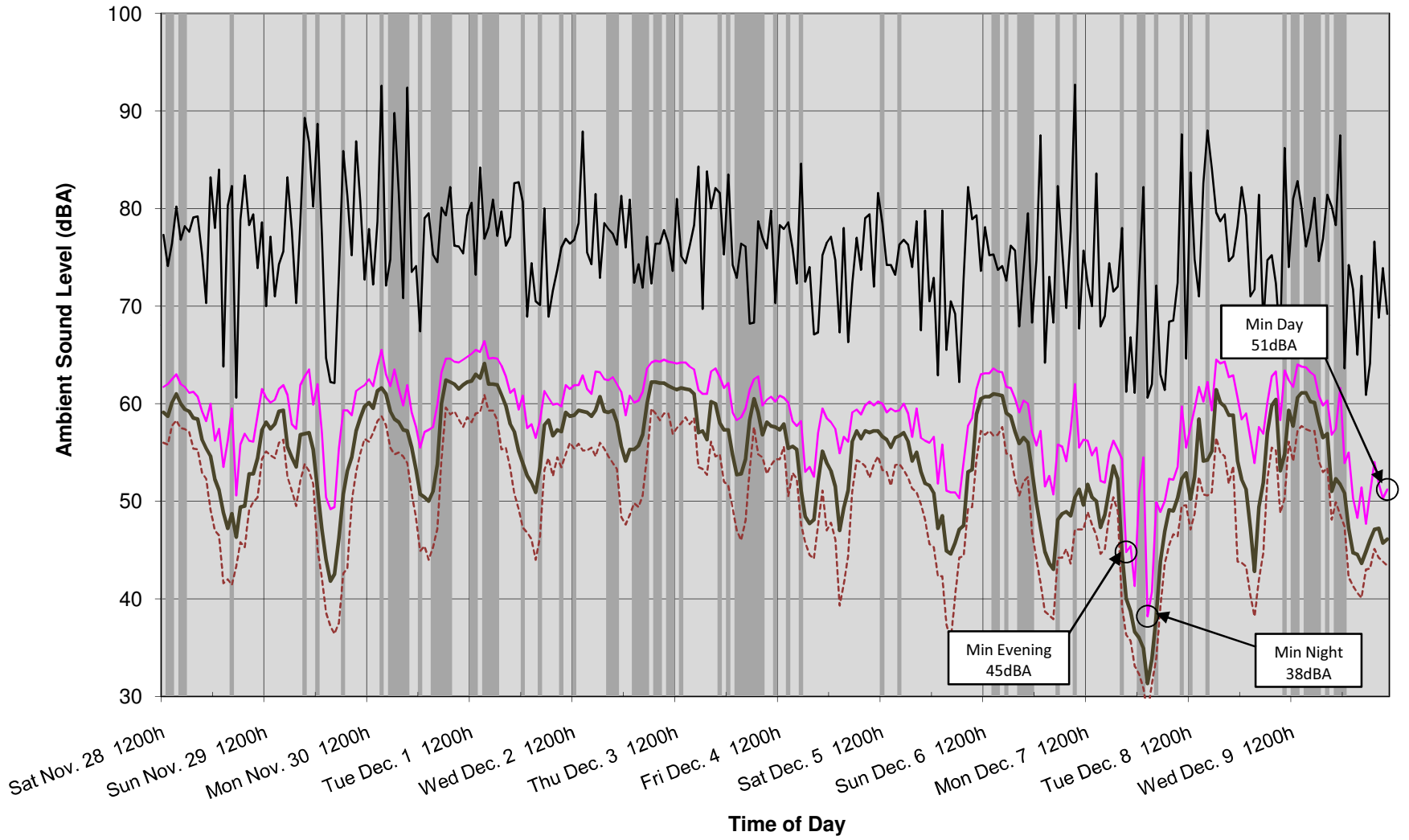
Station	TORONTO CITY CENTRE	Lat	43.63	Long	-79.4	Alt	76.5	Height	10				
	Date	Time	Temp (degC)	DewPoint (degC)	Rel Hum (%)	Wind Dir (deg)	Wind Speed (km/hr)	visibility (km)	stn Press (kPa)	Hmdx	Wind Chill	Weather	
2008-Oct-20 00:00	20-Oct-08	0:00	9.3	2.8	64	27	9	15	101.6				
2008-Oct-20 01:00	20-Oct-08	1:00	8.6	1.5	61	30	6	15	101.61				
2008-Oct-20 02:00	20-Oct-08	2:00	7.9	0.8	61	30	6	15	101.55				
2008-Oct-20 03:00	20-Oct-08	3:00	8.4	0.4	57	29	6	15	101.47				
2008-Oct-20 04:00	20-Oct-08	4:00	7.8	1.1	63	31	6	15	101.49				
2008-Oct-20 05:00	20-Oct-08	5:00	8.5	0.8	58	32	6	15	101.47				
2008-Oct-20 06:00	20-Oct-08	6:00	8.8	1.6	61	28	6	15	101.42				
2008-Oct-20 07:00	20-Oct-08	7:00	8.7	2.5	65	28	6	15	101.35				
2008-Oct-20 08:00	20-Oct-08	8:00	9.7	3	63	26	9	15	101.34				
2008-Oct-20 09:00	20-Oct-08	9:00	10.9	4.9	66	24	11	15	101.28				
2008-Oct-20 10:00	20-Oct-08	10:00	12.7	4.6	58	23	13	15	101.21				
2008-Oct-20 11:00	20-Oct-08	11:00	12.9	5.2	59	23	19		101.18				
2008-Oct-20 12:00	20-Oct-08	12:00	13.2	4.7	56	23	9		101.07			Rain	
2008-Oct-20 13:00	20-Oct-08	13:00	12.9	4.6	57	26	9		100.98				
2008-Oct-20 14:00	20-Oct-08	14:00	13.9	3.9	51	29	6		100.89			Rain	
2008-Oct-20 15:00	20-Oct-08	15:00	13.9	3.7	50	21	4		100.87				
2008-Oct-20 16:00	20-Oct-08	16:00	13.3	5.3	58	8	6		100.81				
2008-Oct-20 17:00	20-Oct-08	17:00	12.6	5.6	62	9	6		100.77				
2008-Oct-20 18:00	20-Oct-08	18:00	13.9	8.2	68	23	17		100.74				
2008-Oct-20 19:00	20-Oct-08	19:00	13.2	8	71	24	19		100.71			Rain	
2008-Oct-20 20:00	20-Oct-08	20:00	12.3	7.8	74	26	15		100.68			Rain	
2008-Oct-20 21:00	20-Oct-08	21:00	11.8	7.8	76	24	13		100.65			Rain	
2008-Oct-20 22:00	20-Oct-08	22:00	11.8	7.9	77	23	24		100.57			Rain	
2008-Oct-20 23:00	20-Oct-08	23:00	11.2	7.9	80	26	15		100.5			Rain	
2008-Oct-21 00:00	21-Oct-08	0:00	11	8	82	24	13		100.41			Rain	
2008-Oct-21 01:00	21-Oct-08	1:00	11.4	8.3	81	27	15		100.37			Rain	
2008-Oct-21 02:00	21-Oct-08	2:00	10.9	7.9	82	27	17		100.33				
2008-Oct-21 03:00	21-Oct-08	3:00	10.4	6.5	77	28	24		100.27				
2008-Oct-21 04:00	21-Oct-08	4:00	9.7	5.5	75	27	24		100.28				
2008-Oct-21 05:00	21-Oct-08	5:00	8	3.7	74	30	32		100.36			Drizzle	
2008-Oct-21 06:00	21-Oct-08	6:00	6.4	1.2	69	30	30		100.41				
2008-Oct-21 07:00	21-Oct-08	7:00	4.8	0.2	72	31	26		100.51				
2008-Oct-21 08:00	21-Oct-08	8:00	4.5	-0.8	68	32	33		100.57				
2008-Oct-21 09:00	21-Oct-08	9:00	4.8	-2.2	60	32	32		100.67				
2008-Oct-21 10:00	21-Oct-08	10:00	5.1	-2.7	57	32	35		100.75				
2008-Oct-21 11:00	21-Oct-08	11:00	5.8	-2.5	55	32	37		100.83				
2008-Oct-21 12:00	21-Oct-08	12:00	4.9	-3.2	56	32	33		100.94				
2008-Oct-21 13:00	21-Oct-08	13:00	4.7	-3.6	55	31	39		101.02				
2008-Oct-21 14:00	21-Oct-08	14:00	4.1	-3.4	58	32	41		101.09				
2008-Oct-21 15:00	21-Oct-08	15:00	3.7	-3.4	60	32	33		101.2				
2008-Oct-21 16:00	21-Oct-08	16:00	2.5	-3.3	66	33	33		101.29			Snow	
2008-Oct-21 17:00	21-Oct-08	17:00	2.5	-2.6	69	32	22		101.39			Snow	
2008-Oct-21 18:00	21-Oct-08	18:00	2.5	-2.7	69	33	26		101.46			Snow	
2008-Oct-21 19:00	21-Oct-08	19:00	2.8	-3.5	63	35	26		101.5				
2008-Oct-21 20:00	21-Oct-08	20:00	2.4	-3.8	64	33	22		101.55				
2008-Oct-21 21:00	21-Oct-08	21:00	2.2	-3.8	64	34	19		101.67				
2008-Oct-21 22:00	21-Oct-08	22:00	2	-3.7	66	34	15		101.7				
2008-Oct-21 23:00	21-Oct-08	23:00	1.7	-4	66	34	26		101.69				
2008-Oct-22 00:00	22-Oct-08	0:00	1.9	-4.2	64	35	24		101.67				
2008-Oct-22 01:00	22-Oct-08	1:00	1.9	-4.6	62	34	20		101.71				
2008-Oct-22 02:00	22-Oct-08	2:00	1.9	-4.7	62	33	13		101.79				
2008-Oct-22 03:00	22-Oct-08	3:00	1.7	-4.8	62	34	11		101.85				
2008-Oct-22 04:00	22-Oct-08	4:00	2	-4.9	60	35	20		101.93				
2008-Oct-22 05:00	22-Oct-08	5:00	1.7	-5.1	61	3	13		102.01				
2008-Oct-22 06:00	22-Oct-08	6:00	1.2	-5.3	62	33	19		102.07				
2008-Oct-22 07:00	22-Oct-08	7:00	1.1	-5.6	61	35	20		102.15				
2008-Oct-22 08:00	22-Oct-08	8:00	1.5	-5.3	61	36	13		102.24				
2008-Oct-22 09:00	22-Oct-08	9:00	2.8	-4.4	59	34	17		102.31				
2008-Oct-22 10:00	22-Oct-08	10:00	3.1	-4.7	57	34	15		102.34				
2008-Oct-22 11:00	22-Oct-08	11:00	4.4	-4.2	54	35	15		102.41				
2008-Oct-22 12:00	22-Oct-08	12:00	4.9	-4.3	51	3	6	15	102.43				
2008-Oct-22 13:00	22-Oct-08	13:00	6.1	-3.5	50	17	6	15	102.4				
2008-Oct-22 14:00	22-Oct-08	14:00	5.2	-2.9	56	16	13	15	102.43				
2008-Oct-22 15:00	22-Oct-08	15:00	6.1	-2.2	55	18	13	15	102.46				
2008-Oct-22 16:00	22-Oct-08	16:00	6.3	-4.1	47	3	15	15	102.44				
2008-Oct-22 17:00	22-Oct-08	17:00	5.3	-3.4	53	6	19	15	102.51				
2008-Oct-22 18:00	22-Oct-08	18:00	5.5	-2	58	5	9	15	102.59				
2008-Oct-22 19:00	22-Oct-08	19:00	5.5	-3.2	53	4	11	15	102.62				
2008-Oct-22 20:00	22-Oct-08	20:00	5.5	-2.4	57	3	13	15	102.65				
2008-Oct-22 21:00	22-Oct-08	21:00	5.7	-2	58	4	13	15	102.7				
2008-Oct-22 22:00	22-Oct-08	22:00	5.6	-1.9	58	3	13	15	102.71				
2008-Oct-22 23:00	22-Oct-08	23:00	6	-2.2	56	9	17	15	102.75				
2008-Oct-23 00:00	23-Oct-08	0:00	6	-1.3	59	5	13	15	102.75				

2008-Oct-23 01:00	23-Oct-08	1:00	5.8	-1.5	59	5	19	15	102.8		
2008-Oct-23 02:00	23-Oct-08	2:00	5.5	-1.7	60	4	17	15	102.77		
2008-Oct-23 03:00	23-Oct-08	3:00	5.5	-1.5	61	3	20	15	102.76		
2008-Oct-23 04:00	23-Oct-08	4:00	5.5	-1.8	59	5	19	15	102.76		
2008-Oct-23 05:00	23-Oct-08	5:00	5.9	-0.7	63	6	19	15	102.79		
2008-Oct-23 06:00	23-Oct-08	6:00	6	-0.2	64	5	19	15	102.78		
2008-Oct-23 07:00	23-Oct-08	7:00	6.8	1.4	68	6	28	15	102.82		
2008-Oct-23 08:00	23-Oct-08	8:00	7.6	0.4	60	13	17	15	102.84		
2008-Oct-23 09:00	23-Oct-08	9:00	7.6	1.2	64	13	13	15	102.89		
2008-Oct-23 10:00	23-Oct-08	10:00	8.4	2.2	65	10	15	15	102.88		
2008-Oct-23 11:00	23-Oct-08	11:00	8.4	2.2	65	8	19	15	102.86		
2008-Oct-23 12:00	23-Oct-08	12:00	8.7	2.9	67	9	22	15	102.78		
2008-Oct-23 13:00	23-Oct-08	13:00	8.6	2.4	65	7	30	15	102.72		
2008-Oct-23 14:00	23-Oct-08	14:00	8.6	2.7	66	8	22	15	102.65		
2008-Oct-23 15:00	23-Oct-08	15:00	8.4	2.9	68	9	22	15	102.61		
2008-Oct-23 16:00	23-Oct-08	16:00	8.3	2.9	69	8	26	15	102.53		
2008-Oct-23 17:00	23-Oct-08	17:00	8.1	3.3	72	8	28	15	102.46		
2008-Oct-23 18:00	23-Oct-08	18:00	8.2	3.8	74	6	20	15	102.52		
2008-Oct-23 19:00	23-Oct-08	19:00	8.3	4.3	76	7	33	15	102.44		
2008-Oct-23 20:00	23-Oct-08	20:00	8.5	4.3	75	8	30	15	102.39		
2008-Oct-23 21:00	23-Oct-08	21:00	8.9	4.6	74	10	19	15	102.36		
2008-Oct-23 22:00	23-Oct-08	22:00	9.3	5.4	77	10	13	15	102.29		
2008-Oct-23 23:00	23-Oct-08	23:00	9.1	3.8	69	10	17	15	102.2		
2008-Oct-24 00:00	24-Oct-08	0:00	8.9	4.4	73	15	13	15	102.12		
2008-Oct-24 01:00	24-Oct-08	1:00	9.1	4.3	72	16	13	15	102.06		
2008-Oct-24 02:00	24-Oct-08	2:00	10.1	3.7	64	18	22	15	102		
2008-Oct-24 03:00	24-Oct-08	3:00	9.6	3.5	66	18	19	15	101.93		
2008-Oct-24 04:00	24-Oct-08	4:00	9.6	3.2	64	17	19	15	101.87		
2008-Oct-24 05:00	24-Oct-08	5:00	8.9	3	66	17	15	15	101.85		
2008-Oct-24 06:00	24-Oct-08	6:00	8.2	2.9	69	14	13	15	101.78		
2008-Oct-24 07:00	24-Oct-08	7:00	8.4	3	69	13	11	15	101.76		
2008-Oct-24 08:00	24-Oct-08	8:00	8.8	3.2	68	14	11	15	101.78		
2008-Oct-24 09:00	24-Oct-08	9:00	9.4	3.6	67	13	9	15	101.7		
2008-Oct-24 10:00	24-Oct-08	10:00	9.4	3.8	68	13	13	15	101.63		
2008-Oct-24 11:00	24-Oct-08	11:00	9.6	4	68	12	13	15	101.56		
2008-Oct-24 12:00	24-Oct-08	12:00	9.7	4.2	69	12	9	15	101.46		
2008-Oct-24 13:00	24-Oct-08	13:00	9.9	4.1	67	12	13	15	101.33		
2008-Oct-24 14:00	24-Oct-08	14:00	10.5	4.4	66	10	13	15	101.24		
2008-Oct-24 15:00	24-Oct-08	15:00	10.4	4.6	67	10	9	15	101.2		
2008-Oct-24 16:00	24-Oct-08	16:00	10.9	4.6	65	11	15	15	101.18		
2008-Oct-24 17:00	24-Oct-08	17:00	11.3	5	65	11	11	15	101.15		
2008-Oct-24 18:00	24-Oct-08	18:00	11.8	3.2	56	14	13	15	101.13		
2008-Oct-24 19:00	24-Oct-08	19:00	11.7	4.2	60	14	15	15	101.04		
2008-Oct-24 20:00	24-Oct-08	20:00	12	4.3	59	14	19	15	100.97		
2008-Oct-24 21:00	24-Oct-08	21:00	12.2	3.8	56	14	22	15	100.89		
2008-Oct-24 22:00	24-Oct-08	22:00	10.9	5.5	69	15	17	15	100.89		Rain
2008-Oct-24 23:00	24-Oct-08	23:00	11.3	7.3	76	18	17	11.3	100.89		Rain
2008-Oct-25 00:00	25-Oct-08	0:00	10.9	7.7	81	19	22	9.7	100.82		Rain
2008-Oct-25 01:00	25-Oct-08	1:00	11.4	7.9	79	18	22	15	100.72		Rain
2008-Oct-25 02:00	25-Oct-08	2:00	11.4	7.9	79	18	19	15	100.68		
2008-Oct-25 03:00	25-Oct-08	3:00	11.4	8	80	17	15	15	100.52		
2008-Oct-25 04:00	25-Oct-08	4:00	11.3	7.7	78	14	11	9.7	100.44		Rain
2008-Oct-25 05:00	25-Oct-08	5:00	11.3	7.9	80	13	7	15	100.34		Rain
2008-Oct-25 06:00	25-Oct-08	6:00	11.1	8.1	82	13	9	6.4	100.26		Rain
2008-Oct-25 07:00	25-Oct-08	7:00	11.1	8.4	83	14	11	8	100.19		Rain
2008-Oct-25 08:00	25-Oct-08	8:00	11.3	8.7	84	15	11	8	100.14		Rain
2008-Oct-25 09:00	25-Oct-08	9:00	11.6	9.2	85	16	13	15	100.05		
2008-Oct-25 10:00	25-Oct-08	10:00	12.2	9.7	85	18	15	15	100.01		
2008-Oct-25 11:00	25-Oct-08	11:00	11.8	9.1	84	24	15	15	99.95		
2008-Oct-25 12:00	25-Oct-08	12:00	12.8	8.9	77	21	11	15	99.9		
2008-Oct-25 13:00	25-Oct-08	13:00	11.6	7.8	77	21	22	15	99.83		Rain
2008-Oct-25 14:00	25-Oct-08	14:00	12.3	7.7	73	20	17	15	99.77		
2008-Oct-25 15:00	25-Oct-08	15:00	11.9	7.9	76	22	26	15	99.73		
2008-Oct-25 16:00	25-Oct-08	16:00	12.7	5	59	24	33	15	99.71		
2008-Oct-25 17:00	25-Oct-08	17:00	11.4	4.5	62	23	35	15	99.76		
2008-Oct-25 18:00	25-Oct-08	18:00	11.2	3.7	60	24	37	15	99.8		
2008-Oct-25 19:00	25-Oct-08	19:00	10.2	2.9	60	24	33	15	99.85		
2008-Oct-25 20:00	25-Oct-08	20:00	10	3.3	63	24	33	15	99.86		
2008-Oct-25 21:00	25-Oct-08	21:00	9.5	3.2	65	24	22	15	99.87		
2008-Oct-25 22:00	25-Oct-08	22:00	9.3	3	65	24	20	15	99.88		
2008-Oct-25 23:00	25-Oct-08	23:00	9.6	3.7	67	23	28	15	99.89		
2008-Oct-26 00:00	26-Oct-08	0:00	8.8	2.9	66	25	30	15	99.89		
2008-Oct-26 01:00	26-Oct-08	1:00	8.7	2.5	65	23	30	15	99.86		
2008-Oct-26 02:00	26-Oct-08	2:00	8.6	2.7	66	22	30	15	99.84		
2008-Oct-26 03:00	26-Oct-08	3:00	9.5	2.9	63	24	33	15	99.78		
2008-Oct-26 04:00	26-Oct-08	4:00	10	4.5	69	21	32	15	99.72		
2008-Oct-26 05:00	26-Oct-08	5:00	10.8	5.1	68	20	30	15	99.65		
2008-Oct-26 06:00	26-Oct-08	6:00	10.9	5.8	71	20	32	15	99.61		
2008-Oct-26 07:00	26-Oct-08	7:00	10.7	5.8	72	20	35	15	99.58		

2008-Oct-26 08:00	26-Oct-08	8:00	11.1	5.8	70	20	33	15	99.57		
2008-Oct-26 09:00	26-Oct-08	9:00	11.8	6.4	69	20	33	15	99.49		
2008-Oct-26 10:00	26-Oct-08	10:00	11.4	6	69	20	35	15	99.44		
2008-Oct-26 11:00	26-Oct-08	11:00	11.6	6.4	70	20	33	15	99.39		
2008-Oct-26 12:00	26-Oct-08	12:00	11.7	6.8	72	21	32	15	99.33		
2008-Oct-26 13:00	26-Oct-08	13:00	12.3	7	70	20	37	15	99.28		
2008-Oct-26 14:00	26-Oct-08	14:00	13.2	7.6	69	21	41	15	99.25		Rain
2008-Oct-26 15:00	26-Oct-08	15:00	11.4	7.6	77	23	43	4.8	99.26		Moderate Rain
2008-Oct-26 16:00	26-Oct-08	16:00	12.1	5.1	62	24	28	15	99.31		
2008-Oct-26 17:00	26-Oct-08	17:00	11.9	6.2	68	24	22	15	99.37		
2008-Oct-26 18:00	26-Oct-08	18:00	9.6	1.7	58	30	15	15	99.51		Rain
2008-Oct-26 19:00	26-Oct-08	19:00	6.9	1.3	67	18	4	15	99.54		
2008-Oct-26 20:00	26-Oct-08	20:00	8.4	1.4	61	28	15	15	99.61		
2008-Oct-26 21:00	26-Oct-08	21:00	8.4	2	64	25	17	15	99.69		
2008-Oct-26 22:00	26-Oct-08	22:00	9	2.2	62	24	24	15	99.69		
2008-Oct-26 23:00	26-Oct-08	23:00	9.2	2.6	63	23	28	15	99.7		
2008-Oct-27 00:00	27-Oct-08	0:00	9	2.9	66	22	32	15	99.75		
2008-Oct-27 01:00	27-Oct-08	1:00	8.3	2.3	66	23	30	15	99.8		
2008-Oct-27 02:00	27-Oct-08	2:00	7.9	1.4	63	24	30	15	99.82		
2008-Oct-27 03:00	27-Oct-08	3:00	6.9	0.7	65	25	24	15	99.88		
2008-Oct-27 04:00	27-Oct-08	4:00	6.8	0.4	64	24	28	15	99.93		
2008-Oct-27 05:00	27-Oct-08	5:00	6.7	-0.1	62	23	35	15	99.99		
2008-Oct-27 06:00	27-Oct-08	6:00	6.2	0.1	65	23	30	15	100.04		
2008-Oct-27 07:00	27-Oct-08	7:00	5.9	0.4	68	24	37	15	100.11		Rain
2008-Oct-27 08:00	27-Oct-08	8:00	5.4	0.8	72	24	22	15	100.22		Rain
2008-Oct-27 09:00	27-Oct-08	9:00	5.9	1	71	24	26	15	100.29		Rain
2008-Oct-27 10:00	27-Oct-08	10:00	6.8	1.7	70	23	22	15	100.34		
2008-Oct-27 11:00	27-Oct-08	11:00	7.6	2.3	69	23	28	15	100.34		Rain
2008-Oct-27 12:00	27-Oct-08	12:00	8.8	3.4	69	24	17	15	100.33		
2008-Oct-27 13:00	27-Oct-08	13:00	9.6	2.6	62	25	15	15	100.37		
2008-Oct-27 14:00	27-Oct-08	14:00	10.1	2.4	59	24	7	15	100.42		
2008-Oct-27 15:00	27-Oct-08	15:00	8.3	3.2	70	33	4	14.5	100.48		Rain
2008-Oct-27 16:00	27-Oct-08	16:00	8.8	3	67	26	20	15	100.51		
2008-Oct-27 17:00	27-Oct-08	17:00	7.4	1.9	68	33	22	15	100.61		Drizzle
2008-Oct-27 18:00	27-Oct-08	18:00	7.6	2.2	69	34	9	15	100.67		
2008-Oct-27 19:00	27-Oct-08	19:00	7.1	2.2	71	31	13	15	100.69		
2008-Oct-27 20:00	27-Oct-08	20:00	6.4	1.5	71	32	13	15	100.71		
2008-Oct-27 21:00	27-Oct-08	21:00	5.9	1.1	71	33	7	15	100.77		
2008-Oct-27 22:00	27-Oct-08	22:00	5.5	0.9	72	32	6	15	100.77		
2008-Oct-27 23:00	27-Oct-08	23:00	5.3	0.7	72	33	17	15	100.72		

York-Durham EfW Project - Monitoring Results (Baseline Road)

Invalid Data
 Leq [dBA]
 Lmax [dBA]
 L(90) [dBA]
 Lmin [dBA]
 Min Leq



Weather Data for Monitoring Period - Baseline Road

Station	TORONTO CI	Lat	43.63	Long	-79.4	Alt	76.5	Height	10				
	Date	Time	Temp (degC)	DewPoint (degC)	Rel Hum (%)	Wind Dir (deg)	Wind Speed (km/hr)	visibility (km)	stn Press (kPa)	Hmdx	Wind Chill	Weather	
2008-Nov-28 00:00	28-Nov-08	0:00	2.6	-2.4	70	21	13	12.9	99.58			Rain	
2008-Nov-28 01:00	28-Nov-08	1:00	2.5	-1.4	75	20	11	8	99.46			Rain	
2008-Nov-28 02:00	28-Nov-08	2:00	2.1	-1.4	78		0	6.4	99.4			Rain	
2008-Nov-28 03:00	28-Nov-08	3:00	2.3	-1	79	23	4	8	99.35			Rain	
2008-Nov-28 04:00	28-Nov-08	4:00	2.4	-1.1	78	24	17	8	99.37				
2008-Nov-28 05:00	28-Nov-08	5:00	2.6	-1.1	77	23	24	6.4	99.38				
2008-Nov-28 06:00	28-Nov-08	6:00	3.1	-0.9	75	24	30	8	99.44			Rain	
2008-Nov-28 07:00	28-Nov-08	7:00	3.2	-0.9	74	23	33	8	99.49			Rain	
2008-Nov-28 08:00	28-Nov-08	8:00	2.5	-1.1	77	24	33	9.7	99.56			Rain	
2008-Nov-28 09:00	28-Nov-08	9:00	3.3	-0.7	75	24	33	15	99.58			Rain	
2008-Nov-28 10:00	28-Nov-08	10:00	3.7	-1	71	24	41	15	99.6				
2008-Nov-28 11:00	28-Nov-08	11:00	4.3	-1.2	67	25	37	15	99.65				
2008-Nov-28 12:00	28-Nov-08	12:00	4.4	-2.1	63	25	41	15	99.62			Rain	
2008-Nov-28 13:00	28-Nov-08	13:00	4.4	-2.2	62	25	37	15	99.61			Rain	
2008-Nov-28 14:00	28-Nov-08	14:00	4.3	-2.2	63	25	37	15	99.59				
2008-Nov-28 15:00	28-Nov-08	15:00	3.9	-2.4	63	25	39	15	99.61				
2008-Nov-28 16:00	28-Nov-08	16:00	3.3	-3.1	63	30	30	15	99.69			Rain	
2008-Nov-28 17:00	28-Nov-08	17:00	2.6	-4.5	59	28	22	15	99.78				
2008-Nov-28 18:00	28-Nov-08	18:00	2.3	-4.3	62	27	24	15	99.88				
2008-Nov-28 19:00	28-Nov-08	19:00	1.7	-3.8	67	27	22	15	99.96				
2008-Nov-28 20:00	28-Nov-08	20:00	2.2	-3.2	67	25	22	15	100.02				
2008-Nov-28 21:00	28-Nov-08	21:00	2.1	-2.6	71	26	24	15	100.08				
2008-Nov-28 22:00	28-Nov-08	22:00	2	-2.4	73	24	26	15	100.1				
2008-Nov-28 23:00	28-Nov-08	23:00	1.9	-2.2	74	25	24	15	100.12				
2008-Nov-29 00:00	29-Nov-08	0:00	1.9	-2.4	73	25	22	15	100.16				
2008-Nov-29 01:00	29-Nov-08	1:00	2	-2.3	73	24	20	15	100.17				
2008-Nov-29 02:00	29-Nov-08	2:00	2	-2.8	70	27	20	15	100.19			Snow	
2008-Nov-29 03:00	29-Nov-08	3:00	2.3	-3.6	65	27	19	15	100.22				
2008-Nov-29 04:00	29-Nov-08	4:00	2	-3.9	65	27	22	15	100.21				
2008-Nov-29 05:00	29-Nov-08	5:00	1.8	-3.5	68	27	17	15	100.23				
2008-Nov-29 06:00	29-Nov-08	6:00	1.5	-3.9	67	28	13	15	100.26				
2008-Nov-29 07:00	29-Nov-08	7:00	1.2	-4.2	67	27	9	15	100.3				
2008-Nov-29 08:00	29-Nov-08	8:00	1.5	-3.5	69	24	11	15	100.32				
2008-Nov-29 09:00	29-Nov-08	9:00	2.1	-2.8	70	25	15	15	100.34				
2008-Nov-29 10:00	29-Nov-08	10:00	2.6	-2.7	68	24	19	15	100.39				
2008-Nov-29 11:00	29-Nov-08	11:00	3.4	-2.6	65	23	17	15	100.38				
2008-Nov-29 12:00	29-Nov-08	12:00	3.7	-2.6	63	23	13	15	100.33				
2008-Nov-29 13:00	29-Nov-08	13:00	4.4	-1.5	65	20	15	15	100.29				
2008-Nov-29 14:00	29-Nov-08	14:00	4.5	-3.5	56	21	24	15	100.23				
2008-Nov-29 15:00	29-Nov-08	15:00	5.6	-4.2	49	23	22	15	100.24				
2008-Nov-29 16:00	29-Nov-08	16:00	4.3	-5	51	24	28	15	100.27				
2008-Nov-29 17:00	29-Nov-08	17:00	2.7	-6.4	51	28	15	15	100.29				
2008-Nov-29 18:00	29-Nov-08	18:00	2.4	-6.7	51	30	6	15	100.24				
2008-Nov-29 19:00	29-Nov-08	19:00	-0.1	-5.9	65		0	15	100.23				
2008-Nov-29 20:00	29-Nov-08	20:00	-0.7	-6.6	64		0	15	100.23				
2008-Nov-29 21:00	29-Nov-08	21:00	-0.2	-5.3	68	21	4	15	100.23				
2008-Nov-29 22:00	29-Nov-08	22:00	1.9	-3.6	67	26	7	15	100.24				
2008-Nov-29 23:00	29-Nov-08	23:00	1.7	-4.7	62	31	6	15	100.22				
2008-Nov-30 00:00	30-Nov-08	0:00	-0.1	-4.8	71	35	4	15	100.19				
2008-Nov-30 01:00	30-Nov-08	1:00	0.6	-4.1	71	6	9	15	100.14				
2008-Nov-30 02:00	30-Nov-08	2:00	1	-3.1	74	7	11	15	100.11				
2008-Nov-30 03:00	30-Nov-08	3:00	1.4	-2.8	74	6	15	15	100.05				
2008-Nov-30 04:00	30-Nov-08	4:00	0.7	-3.5	73	7	15	15	99.93				
2008-Nov-30 05:00	30-Nov-08	5:00	1.4	-2.9	73	6	11	15	99.96				
2008-Nov-30 06:00	30-Nov-08	6:00	1.6	-2.9	72	7	17	15	99.87				
2008-Nov-30 07:00	30-Nov-08	7:00	2.4	-2.8	68	9	20	15	99.82				
2008-Nov-30 08:00	30-Nov-08	8:00	2	-4.1	64	9	19	15	99.82				
2008-Nov-30 09:00	30-Nov-08	9:00	2.5	-3.8	63	9	26	15	99.73				
2008-Nov-30 10:00	30-Nov-08	10:00	2.6	-3.8	63	9	28	15	99.68				
2008-Nov-30 11:00	30-Nov-08	11:00	3.3	-3.8	60	10	26	15	99.6				
2008-Nov-30 12:00	30-Nov-08	12:00	2.9	-3.8	61	9	30	15	99.48				
2008-Nov-30 13:00	30-Nov-08	13:00	2.8	-2.8	67	9	26	15	99.35				
2008-Nov-30 14:00	30-Nov-08	14:00	2.9	-2.6	67	9	33	15	99.19				
2008-Nov-30 15:00	30-Nov-08	15:00	3	-2.1	69	9	30	15	99.18				
2008-Nov-30 16:00	30-Nov-08	16:00	2.5	-1.6	74	9	37	8	99.08			Rain	

2008-Nov-30 17:00	30-Nov-08	17:00	2.4	-0.7	80	9	43	9.7	98.97		Rain
2008-Nov-30 18:00	30-Nov-08	18:00	2.8	-0.1	81	8	43	8	98.88		Rain
2008-Nov-30 19:00	30-Nov-08	19:00	2.9	-0.1	81	8	46	8	98.7		Rain
2008-Nov-30 20:00	30-Nov-08	20:00	2.8	0.1	82	9	44	12.9	98.56		Moderate Rain
2008-Nov-30 21:00	30-Nov-08	21:00	2.9	0.3	83	8	41	8	98.43		Moderate Rain
2008-Nov-30 22:00	30-Nov-08	22:00	2.9	0.3	83	8	43	6.4	98.32		Moderate Rain
2008-Nov-30 23:00	30-Nov-08	23:00	2.9	0.4	84	9	39	5.6	98.21		Rain
2008-Dec-1 00:00	1-Dec-08	0:00	3.1	0.7	84	9	33	6.4	98.15		Moderate Rain
2008-Dec-1 01:00	1-Dec-08	1:00	3.4	0.9	84	11	22	5.6	98.01		
2008-Dec-1 02:00	1-Dec-08	2:00	3.2	0.8	84	12	20	15	97.97		Rain
2008-Dec-1 03:00	1-Dec-08	3:00	3.3	1	85	13	17	15	97.92		Rain
2008-Dec-1 04:00	1-Dec-08	4:00	3.4	1.2	85	15	11	12.9	97.86		Rain
2008-Dec-1 05:00	1-Dec-08	5:00	4	1.7	85	19	15	6.4	97.84		Rain
2008-Dec-1 06:00	1-Dec-08	6:00	4.1	1.9	86	23	22	15	97.93		Rain
2008-Dec-1 07:00	1-Dec-08	7:00	4	1	81	24	37	15	98.01		
2008-Dec-1 08:00	1-Dec-08	8:00	3.7	0.2	78	23	28	15	98.06		
2008-Dec-1 09:00	1-Dec-08	9:00	3.5	-0.7	74	22	37	15	98.13		
2008-Dec-1 10:00	1-Dec-08	10:00	3.7	-0.1	76	21	28	15	98.18		
2008-Dec-1 11:00	1-Dec-08	11:00	4.2	-1.2	68	23	35	15	98.2		Rain
2008-Dec-1 12:00	1-Dec-08	12:00	4.1	-1.4	67	22	33	15	98.22		Rain
2008-Dec-1 13:00	1-Dec-08	13:00	3.4	-0.9	73	22	32	15	98.28		Rain
2008-Dec-1 14:00	1-Dec-08	14:00	3.2	-0.5	77	22	39	15	98.33		Rain
2008-Dec-1 15:00	1-Dec-08	15:00	3.2	-0.1	79	24	32	15	98.39		Rain
2008-Dec-1 16:00	1-Dec-08	16:00	2.4	-0.5	81	23	39	9.7	98.48		Rain
2008-Dec-1 17:00	1-Dec-08	17:00	2.9	-0.3	79	21	43	15	98.56		
2008-Dec-1 18:00	1-Dec-08	18:00	3	-0.7	77	23	35	15	98.61		
2008-Dec-1 19:00	1-Dec-08	19:00	2.8	-0.8	77	22	35	15	98.7		
2008-Dec-1 20:00	1-Dec-08	20:00	2.8	-0.9	77	24	35	15	98.81		
2008-Dec-1 21:00	1-Dec-08	21:00	2.5	-1.2	77	26	28	15	98.95		Snow
2008-Dec-1 22:00	1-Dec-08	22:00	2	-3	69	27	35	15	99.06		
2008-Dec-1 23:00	1-Dec-08	23:00	1.3	-5.4	61	25	41	15	99.18		
2008-Dec-2 00:00	2-Dec-08	0:00	0.8	-5.8	61	24	35	15	99.33		
2008-Dec-2 01:00	2-Dec-08	1:00	0.7	-5.2	65	24	35	15	99.43		
2008-Dec-2 02:00	2-Dec-08	2:00	0.7	-5.4	64	25	37	15	99.57		
2008-Dec-2 03:00	2-Dec-08	3:00	0.7	-5	66	26	39	15	99.69		
2008-Dec-2 04:00	2-Dec-08	4:00	0.4	-4.3	71	26	33	15	99.8		Snow
2008-Dec-2 05:00	2-Dec-08	5:00	0.9	-4.6	67	26	32	15	99.93		
2008-Dec-2 06:00	2-Dec-08	6:00	1.1	-5	64	25	28	15	100.07		
2008-Dec-2 07:00	2-Dec-08	7:00	1.1	-4.6	66	25	32	15	100.24		
2008-Dec-2 08:00	2-Dec-08	8:00	1	-5.1	64	25	33	15	100.37		Rain
2008-Dec-2 09:00	2-Dec-08	9:00	0.9	-4.8	66	25	28	15	100.49		Snow
2008-Dec-2 10:00	2-Dec-08	10:00	0.6	-4.7	68	24	35	15	100.59		Snow
2008-Dec-2 11:00	2-Dec-08	11:00	1.1	-5.3	62	24	32	15	100.67		Rain
2008-Dec-2 12:00	2-Dec-08	12:00	1.2	-5.3	62	24	35	15	100.67		
2008-Dec-2 13:00	2-Dec-08	13:00	1.3	-6.7	55	25	32	15	100.68		
2008-Dec-2 14:00	2-Dec-08	14:00	1.9	-7.7	49	25	30	15	100.69		
2008-Dec-2 15:00	2-Dec-08	15:00	1.6	-7.7	50	25	32	15	100.73		
2008-Dec-2 16:00	2-Dec-08	16:00	1.4	-8.3	48	25	30	15	100.8		
2008-Dec-2 17:00	2-Dec-08	17:00	1.3	-7.5	52	22	35	15	100.82		
2008-Dec-2 18:00	2-Dec-08	18:00	0.6	-6.2	60	22	37	15	100.9		
2008-Dec-2 19:00	2-Dec-08	19:00	-0.1	-6.5	62	24	39	15	100.95	-7	Rain
2008-Dec-2 20:00	2-Dec-08	20:00	0.4	-6.2	61	24	41	15	100.96		Rain
2008-Dec-2 21:00	2-Dec-08	21:00	0.4	-6.2	61	23	41	15	100.92		
2008-Dec-2 22:00	2-Dec-08	22:00	-0.1	-6.2	63	26	26	15	100.93	-6	
2008-Dec-2 23:00	2-Dec-08	23:00	-0.2	-6.4	63	25	32	15	100.93	-7	
2008-Dec-3 00:00	3-Dec-08	0:00	0.1	-6.1	63	24	32	15	100.95		
2008-Dec-3 01:00	3-Dec-08	1:00	1.1	-5.7	60	23	39	15	100.93		
2008-Dec-3 02:00	3-Dec-08	2:00	0.9	-5.5	62	21	44	15	100.96		
2008-Dec-3 03:00	3-Dec-08	3:00	0.8	-5.5	63	22	48	15	101		
2008-Dec-3 04:00	3-Dec-08	4:00	0.7	-5.6	63	21	39	15	100.97		
2008-Dec-3 05:00	3-Dec-08	5:00	1.1	-5	64	21	37	15	100.94		
2008-Dec-3 06:00	3-Dec-08	6:00	1.3	-4.5	65	22	41	15	100.9		
2008-Dec-3 07:00	3-Dec-08	7:00	1.7	-4	66	21	39	15	100.88		
2008-Dec-3 08:00	3-Dec-08	8:00	2.3	-3.5	65	22	37	15	100.83		
2008-Dec-3 09:00	3-Dec-08	9:00	2.6	-3.1	66	22	39	15	100.82		
2008-Dec-3 10:00	3-Dec-08	10:00	3.2	-3.1	63	22	43	15	100.8		
2008-Dec-3 11:00	3-Dec-08	11:00	4.4	-2.4	61	22	35	15	100.72		
2008-Dec-3 12:00	3-Dec-08	12:00	4.3	-2.6	61	22	41	15	100.62		
2008-Dec-3 13:00	3-Dec-08	13:00	4.9	-2.2	60	22	30	15	100.55		
2008-Dec-3 14:00	3-Dec-08	14:00	4.8	-2.2	60	21	28	15	100.47		
2008-Dec-3 15:00	3-Dec-08	15:00	5.1	-2.1	60	21	28	15	100.45		

2008-Dec-3 16:00	3-Dec-08	16:00	4.8	-2.2	60	21	26	15	100.44		
2008-Dec-3 17:00	3-Dec-08	17:00	4.4	-1.2	67	23	15	15	100.4		
2008-Dec-3 18:00	3-Dec-08	18:00	4.4	-0.4	71	25	4	15	100.35		
2008-Dec-3 19:00	3-Dec-08	19:00	5	-0.8	66	16	7	15	100.26		
2008-Dec-3 20:00	3-Dec-08	20:00	5.4	-0.9	64	17	9	15	100.22		
2008-Dec-3 21:00	3-Dec-08	21:00	6.2	-0.8	61	22	39	15	100.14		Rain
2008-Dec-3 22:00	3-Dec-08	22:00	5.4	0.2	69	23	33	15	100.11		
2008-Dec-3 23:00	3-Dec-08	23:00	5.7	0.6	70	22	33	15	100.09		Rain
2008-Dec-4 00:00	4-Dec-08	0:00	5.4	1.2	74	22	26	15	100.02		Drizzle
2008-Dec-4 01:00	4-Dec-08	1:00	5.1	1.5	78	22	22	6.4	99.99		Rain
2008-Dec-4 02:00	4-Dec-08	2:00	4.8	1.7	80	22	17	3.7	99.99		Rain
2008-Dec-4 03:00	4-Dec-08	3:00	4.8	1.5	79	24	28	15	100.02		Rain
2008-Dec-4 04:00	4-Dec-08	4:00	4.4	0.9	78	24	20	15	100.04		Rain
2008-Dec-4 05:00	4-Dec-08	5:00	4.2	0.1	75	25	20	15	100.04		Rain
2008-Dec-4 06:00	4-Dec-08	6:00	4.1	-0.4	72	25	26	15	100.1		Rain
2008-Dec-4 07:00	4-Dec-08	7:00	3.8	-0.9	71	26	28	15	100.23		Rain
2008-Dec-4 08:00	4-Dec-08	8:00	2.7	-3.9	62	28	30	15	100.39		
2008-Dec-4 09:00	4-Dec-08	9:00	2.1	-5.1	59	27	32	15	100.58		
2008-Dec-4 10:00	4-Dec-08	10:00	1.6	-6.6	54	27	46	15	100.73		
2008-Dec-4 11:00	4-Dec-08	11:00	1.9	-7.2	51	27	30	15	100.85		
2008-Dec-4 12:00	4-Dec-08	12:00	2.3	-7.4	49	27	33	15	100.88		
2008-Dec-4 13:00	4-Dec-08	13:00	1	-8.8	48	28	35	15	100.93		Rain
2008-Dec-4 14:00	4-Dec-08	14:00	0.7	-8.6	50	27	33	15	100.99		
2008-Dec-4 15:00	4-Dec-08	15:00	0.6	-8.8	49	28	33	15	101.01		
2008-Dec-4 16:00	4-Dec-08	16:00	0.3	-7.7	55	26	32	15	101.09		
2008-Dec-4 17:00	4-Dec-08	17:00	-0.2	-7.8	56	27	24	15	101.16	-6	Snow
2008-Dec-4 18:00	4-Dec-08	18:00	-0.2	-8.5	54	26	30	15	101.23	-7	
2008-Dec-4 19:00	4-Dec-08	19:00	-0.7	-8.4	56	27	30	15	101.28	-7	Snow
2008-Dec-4 20:00	4-Dec-08	20:00	-1	-9.2	54	26	24	15	101.32	-7	
2008-Dec-4 21:00	4-Dec-08	21:00	-1.5	-9	57	27	26	15	101.35	-8	
2008-Dec-4 22:00	4-Dec-08	22:00	-1.5	-9.4	55	26	30	15	101.36	-8	
2008-Dec-4 23:00	4-Dec-08	23:00	-1.9	-9.4	56	26	26	15	101.4	-8	
2008-Dec-5 00:00	5-Dec-08	0:00	-2.6	-9.6	59	26	26	15	101.39	-9	
2008-Dec-5 01:00	5-Dec-08	1:00	-2.8	-9.6	59	27	26	15	101.38	-10	
2008-Dec-5 02:00	5-Dec-08	2:00	-3.5	-10.1	60	28	20	15	101.37	-10	
2008-Dec-5 03:00	5-Dec-08	3:00	-3.5	-10.6	58	27	22	15	101.4	-10	
2008-Dec-5 04:00	5-Dec-08	4:00	-3.9	-10.7	59	27	32	15	101.38	-12	
2008-Dec-5 05:00	5-Dec-08	5:00	-4.2	-11	59	28	28	15	101.36	-12	
2008-Dec-5 06:00	5-Dec-08	6:00	-4.6	-11.2	60	28	30	15	101.38	-12	
2008-Dec-5 07:00	5-Dec-08	7:00	-4.7	-11.3	60	27	30	15	101.4	-13	
2008-Dec-5 08:00	5-Dec-08	8:00	-4.6	-11.6	58	27	32	15	101.42	-13	
2008-Dec-5 09:00	5-Dec-08	9:00	-4.2	-11.1	59	26	30	15	101.44	-12	
2008-Dec-5 10:00	5-Dec-08	10:00	-2.9	-11.6	51	26	35	15	101.46	-11	
2008-Dec-5 11:00	5-Dec-08	11:00	-2.4	-12	48	25	39	15	101.42	-11	
2008-Dec-5 12:00	5-Dec-08	12:00	-2	-12.5	44	26	32	15	101.34	-9	
2008-Dec-5 13:00	5-Dec-08	13:00	-2.2	-13.8	41	27	32	15	101.28	-10	
2008-Dec-5 14:00	5-Dec-08	14:00	-2.4	-13.6	42	28	33	15	101.26	-10	
2008-Dec-5 15:00	5-Dec-08	15:00	-3.4	-13.3	46	26	41	15	101.23	-12	
2008-Dec-5 16:00	5-Dec-08	16:00	-4	-14.6	43	26	33	15	101.23	-12	
2008-Dec-5 17:00	5-Dec-08	17:00	-4.8	-13.9	49	28	24	15	101.28	-12	
2008-Dec-5 18:00	5-Dec-08	18:00	-4.9	-13.7	50	26	22	15	101.26	-12	
2008-Dec-5 19:00	5-Dec-08	19:00	-5.3	-13.6	52	27	15	15	101.22	-11	
2008-Dec-5 20:00	5-Dec-08	20:00	-4.8	-13.2	52	24	19	15	101.19	-11	
2008-Dec-5 21:00	5-Dec-08	21:00	-4	-12	54	23	30	15	101.13	-12	
2008-Dec-5 22:00	5-Dec-08	22:00	-3.9	-11.4	56	25	28	15	101.07	-11	
2008-Dec-5 23:00	5-Dec-08	23:00	-4	-11.8	55	24	30	15	101.02	-12	
2008-Dec-6 00:00	6-Dec-08	0:00	-4	-11.1	58	25	32	15	100.94	-12	Snow
2008-Dec-6 01:00	6-Dec-08	1:00	-4	-11.9	54	26	30	15	100.89	-12	
2008-Dec-6 02:00	6-Dec-08	2:00	-4.7	-12	57	26	30	15	100.86	-13	
2008-Dec-6 03:00	6-Dec-08	3:00	-4.8	-12.2	56	25	24	15	100.85	-12	Snow
2008-Dec-6 04:00	6-Dec-08	4:00	-4.7	-11.3	60	25	19	15	100.77	-11	Snow
2008-Dec-6 05:00	6-Dec-08	5:00	-4.7	-10.7	63	25	26	12.9	100.7	-12	Snow
2008-Dec-6 06:00	6-Dec-08	6:00	-4.5	-10.4	63	25	22	9.7	100.64	-11	Snow
2008-Dec-6 07:00	6-Dec-08	7:00	-4.8	-10.1	66	25	19	9.7	100.61	-11	Snow
2008-Dec-6 08:00	6-Dec-08	8:00	-4.7	-10.3	65	24	22	15	100.54	-12	Snow
2008-Dec-6 09:00	6-Dec-08	9:00	-4.1	-9.8	64	24	24	9.7	100.47	-11	Snow
2008-Dec-6 10:00	6-Dec-08	10:00	-3.2	-8.5	67	21	28	15	100.39	-10	Snow
2008-Dec-6 11:00	6-Dec-08	11:00	-2	-9.4	57	20	35	15	100.29	-10	
2008-Dec-6 12:00	6-Dec-08	12:00	-2	-9.7	56	21	33	15	100.17	-9	
2008-Dec-6 13:00	6-Dec-08	13:00	-2	-8.9	59	20	41	11.3	100.05	-10	Rain
2008-Dec-6 14:00	6-Dec-08	14:00	-1.9	-8.3	62	19	35	11.3	99.94	-9	Rain

2008-Dec-6 15:00	6-Dec-08	15:00	-0.9	-8.6	56	18	33	15	99.84		-8	
2008-Dec-6 16:00	6-Dec-08	16:00	-1	-7.3	62	19	41	3.5	99.79		-9	Snow
2008-Dec-6 17:00	6-Dec-08	17:00	-0.9	-5.3	72	19	35	2.4	99.73		-8	Snow
2008-Dec-6 18:00	6-Dec-08	18:00	-0.6	-4.9	73	21	37	2.6	99.68		-8	Snow
2008-Dec-6 19:00	6-Dec-08	19:00	-0.1	-5.7	66	21	46	15	99.59		-8	Snow
2008-Dec-6 20:00	6-Dec-08	20:00	-0.6	-5	72	20	39	4.8	99.5		-8	Snow
2008-Dec-6 21:00	6-Dec-08	21:00	0.2	-5.2	67	21	50	15	99.43			Snow
2008-Dec-6 22:00	6-Dec-08	22:00	-0.3	-3.9	77	21	43	2.7	99.35		-8	Snow
2008-Dec-6 23:00	6-Dec-08	23:00	-0.4	-4.8	72	23	37	15	99.29		-8	Snow
2008-Dec-7 00:00	7-Dec-08	0:00	-0.4	-5.4	69	25	35	15	99.24		-7	
2008-Dec-7 01:00	7-Dec-08	1:00	-0.7	-6.2	66	25	30	15	99.25		-7	
2008-Dec-7 02:00	7-Dec-08	2:00	-1.1	-7.6	61	26	26	15	99.27		-7	
2008-Dec-7 03:00	7-Dec-08	3:00	-1.7	-8.1	62	28	30	15	99.29		-9	
2008-Dec-7 04:00	7-Dec-08	4:00	-1.8	-7.8	64	28	28	15	99.36		-9	
2008-Dec-7 05:00	7-Dec-08	5:00	-3.3	-10.7	57	29	39	15	99.5		-12	
2008-Dec-7 06:00	7-Dec-08	6:00	-5	-12.7	55	30	43	15	99.65		-14	
2008-Dec-7 07:00	7-Dec-08	7:00	-6.2	-13.8	55	30	44	15	99.84		-16	
2008-Dec-7 08:00	7-Dec-08	8:00	-7.2	-14.6	55	30	43	15	100.02		-17	
2008-Dec-7 09:00	7-Dec-08	9:00	-7.8	-15.1	56	30	44	15	100.15		-18	
2008-Dec-7 10:00	7-Dec-08	10:00	-7.7	-13.8	62	31	41	8	100.34		-18	Snow
2008-Dec-7 11:00	7-Dec-08	11:00	-8.1	-16.4	51	31	43	15	100.53		-19	Snow
2008-Dec-7 12:00	7-Dec-08	12:00	-8.5	-17	50	33	37	15	100.65		-18	
2008-Dec-7 13:00	7-Dec-08	13:00	-8.6	-17.1	50	32	30	15	100.79		-18	
2008-Dec-7 14:00	7-Dec-08	14:00	-8.5	-16.8	51	30	39	15	100.91		-19	
2008-Dec-7 15:00	7-Dec-08	15:00	-8.8	-16.8	52	30	39	15	101.01		-19	
2008-Dec-7 16:00	7-Dec-08	16:00	-8.8	-16.7	53	31	28	15	101.14		-18	
2008-Dec-7 17:00	7-Dec-08	17:00	-8.9	-16.3	55	29	30	15	101.24		-18	
2008-Dec-7 18:00	7-Dec-08	18:00	-9.4	-16.7	55	27	30	15	101.33		-19	
2008-Dec-7 19:00	7-Dec-08	19:00	-10.3	-17.3	56	28	22	15	101.44		-19	
2008-Dec-7 20:00	7-Dec-08	20:00	-10.3	-18.6	51	28	17	15	101.48		-18	
2008-Dec-7 21:00	7-Dec-08	21:00	-10.6	-18.4	53	28	19	15	101.48		-18	
2008-Dec-7 22:00	7-Dec-08	22:00	-10.8	-18.2	54	30	11	15	101.52		-17	
2008-Dec-7 23:00	7-Dec-08	23:00	-10.5	-18.1	54	30	11	15	101.59		-16	
2008-Dec-8 00:00	8-Dec-08	0:00	-10	-17.7	53	34	11	15	101.57		-16	
2008-Dec-8 01:00	8-Dec-08	1:00	-9.7	-18.1	50	28	11	15	101.63		-15	
2008-Dec-8 02:00	8-Dec-08	2:00	-9.7	-18.1	50	36	6	15	101.66			
2008-Dec-8 03:00	8-Dec-08	3:00	-8.9	-16.4	55	7	13	15	101.69		-15	
2008-Dec-8 04:00	8-Dec-08	4:00	-9.1	-14.9	63	7	15	15	101.69		-16	
2008-Dec-8 05:00	8-Dec-08	5:00	-9.5	-14	70	6	17	5.6	101.68		-17	Snow
2008-Dec-8 06:00	8-Dec-08	6:00	-9.4	-13.8	70	6	19	5.6	101.68		-17	Snow
2008-Dec-8 07:00	8-Dec-08	7:00	-8.5	-12.7	72	5	13	5.6	101.69		-14	Snow
2008-Dec-8 08:00	8-Dec-08	8:00	-7.8	-12	72	7	17	1.4	101.72		-14	Snow
2008-Dec-8 09:00	8-Dec-08	9:00	-7.3	-11.3	73	6	19	1.9	101.73		-14	Snow
2008-Dec-8 10:00	8-Dec-08	10:00	-5.9	-10.2	72	8	11	1.8	101.75		-11	Snow
2008-Dec-8 11:00	8-Dec-08	11:00	-5.2	-10.3	67	14	17	4.8	101.75		-11	Snow
2008-Dec-8 12:00	8-Dec-08	12:00	-4.7	-11	61	16	17	15	101.69		-11	
2008-Dec-8 13:00	8-Dec-08	13:00	-4.2	-11.6	56	15	13	15	101.63		-9	
2008-Dec-8 14:00	8-Dec-08	14:00	-3.9	-10.8	59	14	15	9.7	101.61		-9	Snow
2008-Dec-8 15:00	8-Dec-08	15:00	-3.5	-10.9	56	14	20	15	101.56		-10	Rain
2008-Dec-8 16:00	8-Dec-08	16:00	-2.9	-11.1	53	12	15	15	101.51		-8	
2008-Dec-8 17:00	8-Dec-08	17:00	-2.8	-11.7	50	12	13	15	101.51		-7	
2008-Dec-8 18:00	8-Dec-08	18:00	-2.6	-11.9	49	13	19	15	101.48		-8	
2008-Dec-8 19:00	8-Dec-08	19:00	-2.4	-11.2	51	12	17	15	101.44		-8	
2008-Dec-8 20:00	8-Dec-08	20:00	-2	-11.3	49	13	19	15	101.42		-8	
2008-Dec-8 21:00	8-Dec-08	21:00	-2	-11.3	49	13	19	15	101.34		-8	
2008-Dec-8 22:00	8-Dec-08	22:00	-2	-10.9	51	12	13	15	101.28		-6	
2008-Dec-8 23:00	8-Dec-08	23:00	-1.8	-10	53	14	13	9.7	101.27		-6	Snow
2008-Dec-9 00:00	9-Dec-08	0:00	-2.1	-8.1	63	13	15	3.9	101.18		-7	Snow
2008-Dec-9 01:00	9-Dec-08	1:00	-2.1	-6.7	71	13	15	2.7	101.11		-7	Snow
2008-Dec-9 02:00	9-Dec-08	2:00	-2	-5.9	75	12	15	1.1	101.07		-7	Snow
2008-Dec-9 03:00	9-Dec-08	3:00	-1.6	-5.3	76	11	19	0.6	100.99		-7	Snow
2008-Dec-9 04:00	9-Dec-08	4:00	-0.7	-4.1	78	13	17	1.4	100.89		-6	Snow
2008-Dec-9 05:00	9-Dec-08	5:00	-0.1	-3.4	78	14	13	11.3	100.75		-4	Snow
2008-Dec-9 06:00	9-Dec-08	6:00	0.6	-3.3	75	11	17	15	100.61			
2008-Dec-9 07:00	9-Dec-08	7:00	0.9	-3.5	72	10	20	15	100.53			
2008-Dec-9 08:00	9-Dec-08	8:00	1.3	-3.4	71	10	9	15	100.51			
2008-Dec-9 09:00	9-Dec-08	9:00	1.3	-3.1	72	7	7	14.5	100.49			Rain
2008-Dec-9 10:00	9-Dec-08	10:00	1.7	-2.5	74	7	4	12.9	100.47			Moderate Rain
2008-Dec-9 11:00	9-Dec-08	11:00	1.8	-1.8	77		0	8	100.43			Rain
2008-Dec-9 12:00	9-Dec-08	12:00	2.9	-0.8	77	22	11	12.9	100.37			Rain
2008-Dec-9 13:00	9-Dec-08	13:00	3.7	0.1	77	20	17	15	100.25			Freezing Rain

2008-Dec-9 14:00	9-Dec-08 14:00	3.6	0.1	78	19	13	11.3	100.17			Rain
2008-Dec-9 15:00	9-Dec-08 15:00	3.7	0.5	80	20	17	8	100.14			Rain
2008-Dec-9 16:00	9-Dec-08 16:00	3.5	0.5	81	19	6	5.6	100.12			Rain
2008-Dec-9 17:00	9-Dec-08 17:00	3.5	0.7	82	16	7	4	100.08			Rain
2008-Dec-9 18:00	9-Dec-08 18:00	3.6	0.9	82	11	4	1	100.07			
2008-Dec-9 19:00	9-Dec-08 19:00	3.4	0.7	82	10	4	0.5	100.04			Rain
2008-Dec-9 20:00	9-Dec-08 20:00	3.4	0.9	84	11	4	0.5	100			
2008-Dec-9 21:00	9-Dec-08 21:00	3.9	1	81		0	0.3	99.98			
2008-Dec-9 22:00	9-Dec-08 22:00	4.1	1.5	83		0	0.3	99.96			Rain
2008-Dec-9 23:00	9-Dec-08 23:00	3.1	1	86	29	6	0.3	99.96			Rain
2008-Dec-10 00:00	10-Dec-08 0:00	3.4	1	84	30	7	4.8	99.94			Rain
2008-Dec-10 01:00	10-Dec-08 1:00	3.7	1.3	84	32	9	4.8	99.91			Rain
2008-Dec-10 02:00	10-Dec-08 2:00	3.6	0.8	82	32	9	5.6	99.93			Rain
2008-Dec-10 03:00	10-Dec-08 3:00	2.3	-1	79	32	19	8	100.04			Moderate Rain
2008-Dec-10 04:00	10-Dec-08 4:00	0.9	-3	75	33	22	3.5	100.13			Moderate Snow
2008-Dec-10 05:00	10-Dec-08 5:00	-0.8	-5.5	70	32	26	15	100.29		-7	Snow
2008-Dec-10 06:00	10-Dec-08 6:00	-2	-7	69	32	22	15	100.43		-8	Snow
2008-Dec-10 07:00	10-Dec-08 7:00	-3	-8.1	68	32	24	9.7	100.61		-10	Snow
2008-Dec-10 08:00	10-Dec-08 8:00	-3.5	-8.8	67	33	30	15	100.74		-11	Rain
2008-Dec-10 09:00	10-Dec-08 9:00	-3.5	-8.9	66	34	26	15	100.92		-11	
2008-Dec-10 10:00	10-Dec-08 10:00	-3.3	-8.8	66	33	20	15	100.98		-9	
2008-Dec-10 11:00	10-Dec-08 11:00	-3.2	-9.1	64	34	26	15	101.09		-10	
2008-Dec-10 12:00	10-Dec-08 12:00	-2.1	-9.2	58	34	15	15	101.07		-7	
2008-Dec-10 13:00	10-Dec-08 13:00	-1.8	-8.6	60	32	17	15	101.07		-7	
2008-Dec-10 14:00	10-Dec-08 14:00	-1.9	-8.7	60	36	9	15	101.1			
2008-Dec-10 15:00	10-Dec-08 15:00	-2.6	-9.8	58	31	19	15	101.19		-8	
2008-Dec-10 16:00	10-Dec-08 16:00	-3.5	-10.3	59	31	17	15	101.28		-9	
2008-Dec-10 17:00	10-Dec-08 17:00	-3.9	-10.4	61	33	13	15	101.38		-9	
2008-Dec-10 18:00	10-Dec-08 18:00	-4.7	-11.1	61	34	15	15	101.45		-10	
2008-Dec-10 19:00	10-Dec-08 19:00	-5	-11.7	59	32	11	15	101.46		-10	
2008-Dec-10 20:00	10-Dec-08 20:00	-5.4	-11.5	62	32	15	15	101.42		-11	
2008-Dec-10 21:00	10-Dec-08 21:00	-5.6	-11.7	62	33	15	15	101.39		-11	
2008-Dec-10 22:00	10-Dec-08 22:00	-5.6	-12.2	60	36	20	15	101.41		-12	
2008-Dec-10 23:00	10-Dec-08 23:00	-5.8	-12.4	60	3	13	15	101.39		-11	